

ironlev



Sliding systems for interiors



Magnetic levitation systems for interior doors and partitions

The revolution in magnetic technology for interior environments





Ironlev® magnetic levitation enables contactless sliding in many applications, eliminating any sliding friction and component wear. Magnetic suspension is obtained by combining a magnetic slider with an iron rail.

The use of the latest generation permanent magnets ensures the movement of loads without an electrical supply. The movement, freed from the weight, overcomes the limitations imposed by wheeled systems.

Ironlev® systems combine advanced technology and design to offer unique sliding solutions. Thanks to magnetic levitation, doors and partitions slide without friction, ensuring a smooth, silent and reliable movement. Perfect for modern and functional environments, Ironlev® systems define new standards for interior architecture.

Why magnetic levitation

LIGHTNESS IN MOTION

The door moves along the rail effortlessly and smoothly without any sliding friction, overcoming the weight limits of traditional wheeled systems.

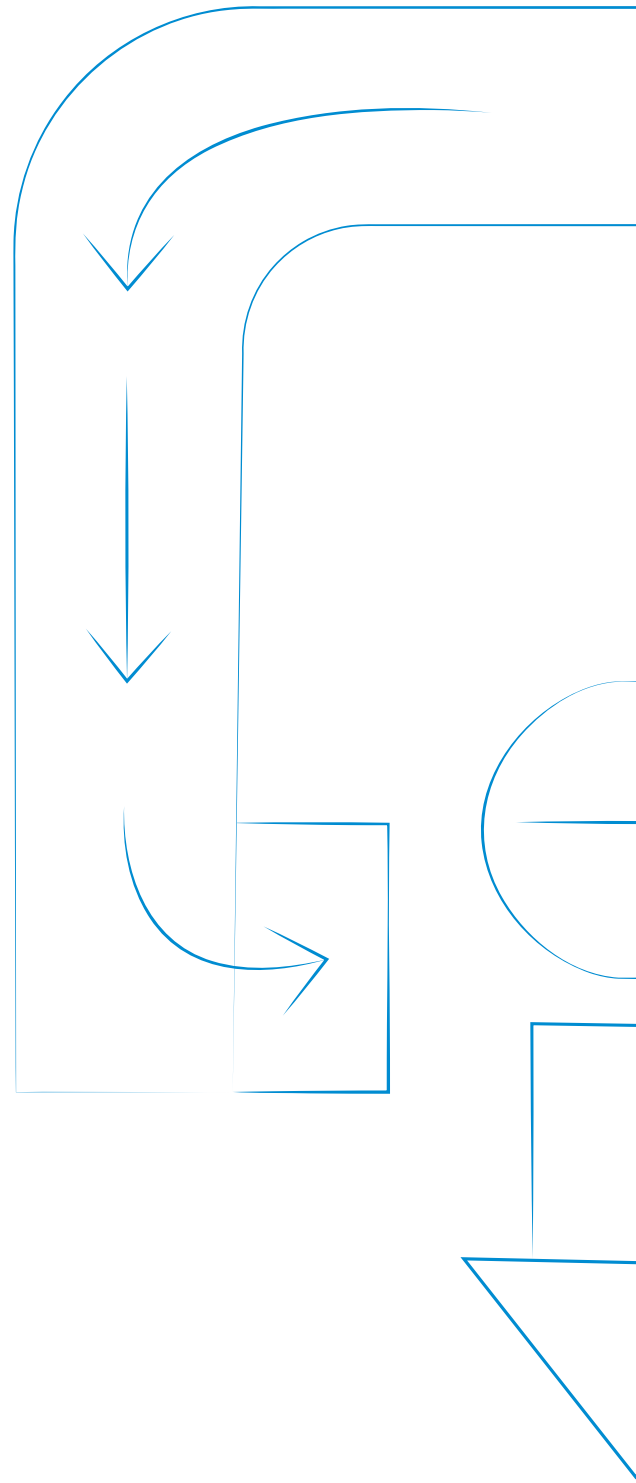
2N pulling force is needed to move a 200kg door.

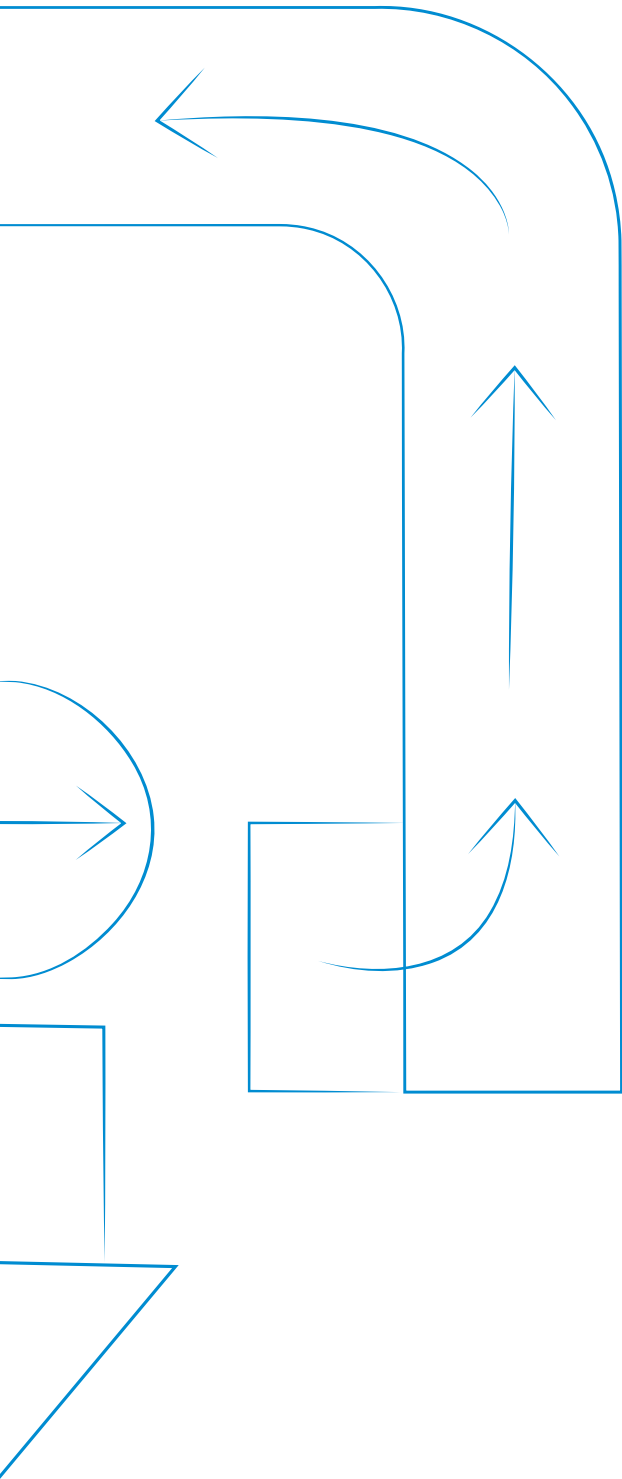
Ironlev® systems have been tested on doors weighing up to 200kg.

RELIABILITY

The extremely low wear of the elements composing the slider ensures high durability and lifetime.

All Ironlev® systems are tested and certified to 100.000 cycles.





SAFETY

Ironlev® systems are intrinsically safe: the magnetic field is totally confined inside the slider section, thus minimising external magnetic dispersion and induced magnetism. This enables the use in domestic environments, as the systems can be also installed in the lower part of the door.

The intensity of dispersed magnetic field is far lower than the limits imposed by the European directives.

MODULARITY

The composition of the sliders determines their number based on the door weight. The systems are available in a range of load capacities, each related to the dimensions and weight of the door, making it possible to create the widest openings without design limits.

EASY INSTALLATION AND ASSEMBLY

Ironlev® systems are designed for easy and safe installation. The sliding systems are mounted in place using standard fixing systems.

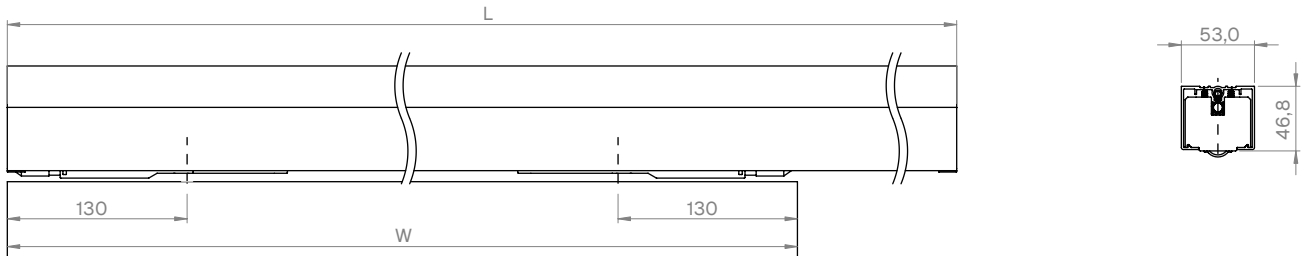
D-Way

D-Way system is designed for interior sliding doors. It offers a load capacity up to 100kg. Wall or ceiling assembly solutions. Ideal for up to 3-meter-high doors.



Product and accessories

CONFIGURATIONS

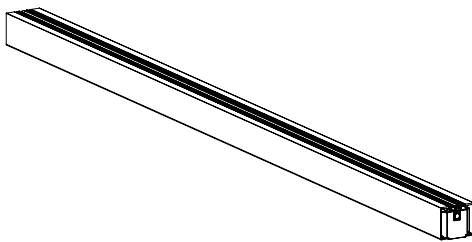


CODE	W	L	WEIGHT	LOAD CAPACITY	MAX. H
			of the system	max. load	max. height
	mm	mm	kg	kg	meters
WD40000	600	1150	2,7	100	3
WD40100	700	1350	3,0	100	3
WD40200	800	1550	3,2	100	3
WD40300	900	1750	3,5	100	3
WD40400	1000	1950	3,7	100	3
WD40500	1100	2150	4,0	100	3
WD40600	1200	2350	4,2	100	3

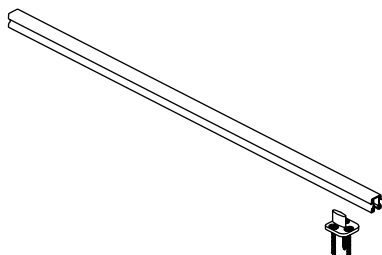
PACKAGE CONTENTS

ARTICLE

DESCRIPTION



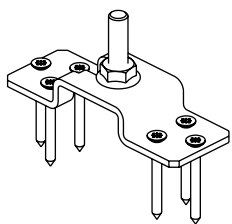
Sliding system



Lower guide with guide fin

ARTICLE

DESCRIPTION



Standard connection bracket assembly

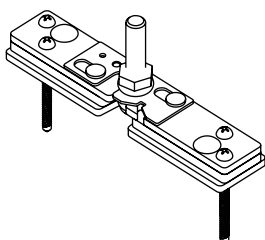
ACCESSORIES

PRODUCT

DESCRIPTION

CODE

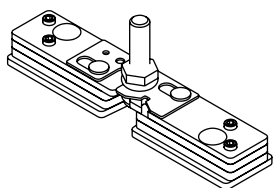
PACKAGE QTY.



Door connection bracket
Wooden door version

100574

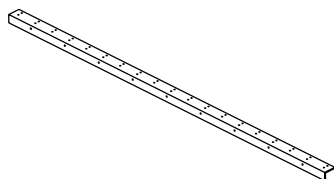
2 pces.



Alu-framed door version

100575

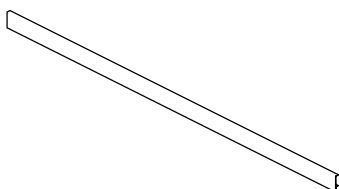
2 pces.



Profile kit for lateral wall
fixing

100577

1 pce.



Side cover

Anodized Aluminium, silver

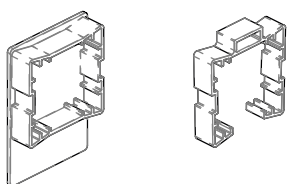
100998

1 pce.

Painted Aluminium, white

100999

1 pce.



Caps and spacers set
to fix cover

101000

(2+4) pces.

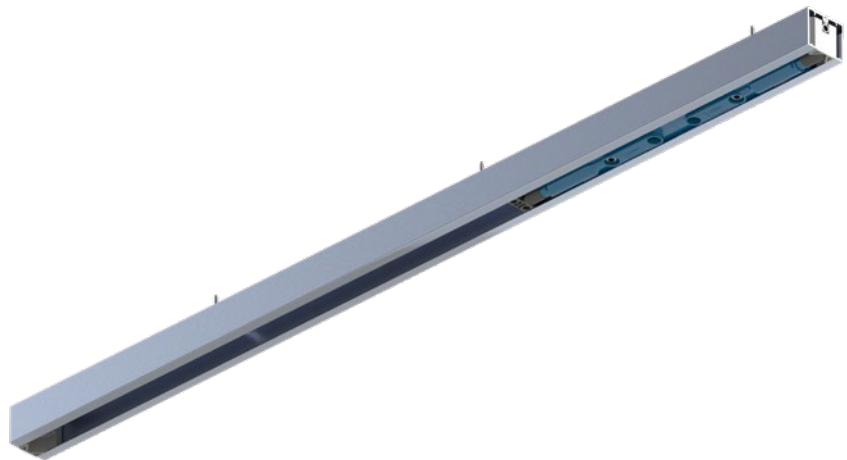
Technical data

Load capacity

100kg

Overall section (mm)

53x46,0



FEATURES

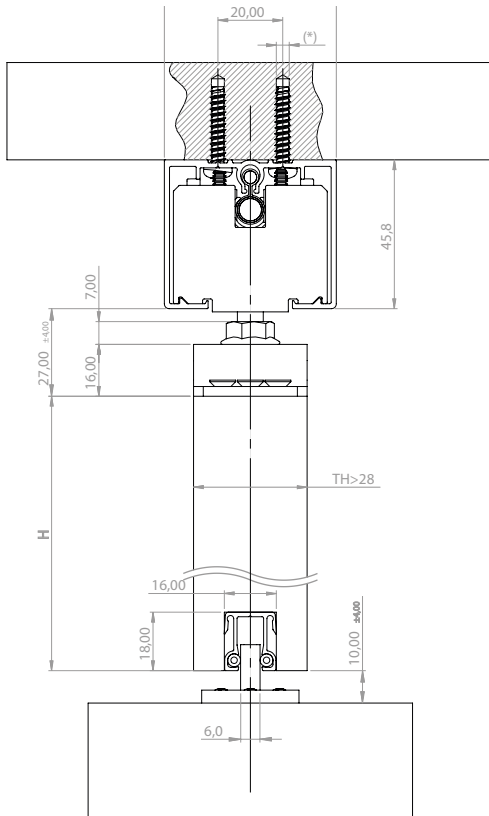
- Ironlev® levitation sliding
- Coated sliding profile for maximum silent movement
- Magnetic soft closing
- Fixing options: ceiling or wall mounted
- Lower special guide profile for maximum silent movement

TECHNICAL INFORMATION

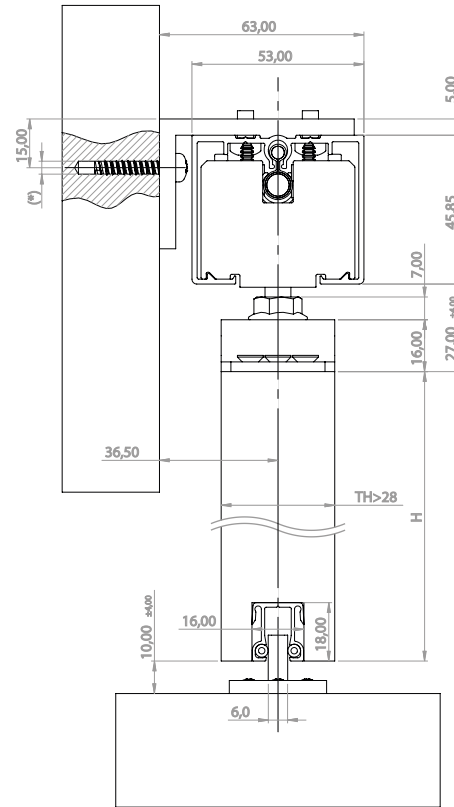
- Sliding force:
 - 50kg door: 0.5N
 - 100kg door: 3N
- Vertical adjustment of the door by means of M8 pins
- Opening force: 10N
- Damping stroke: 50mm
- Maximum load capacity: 100kg
- Maximum door height: 3m
- Available door widths: from 600mm up to 1200mm, in 100mm intervals
- Tested according to UNI EN 1527 standard to 100.000 cycles

FIXING SCHEME

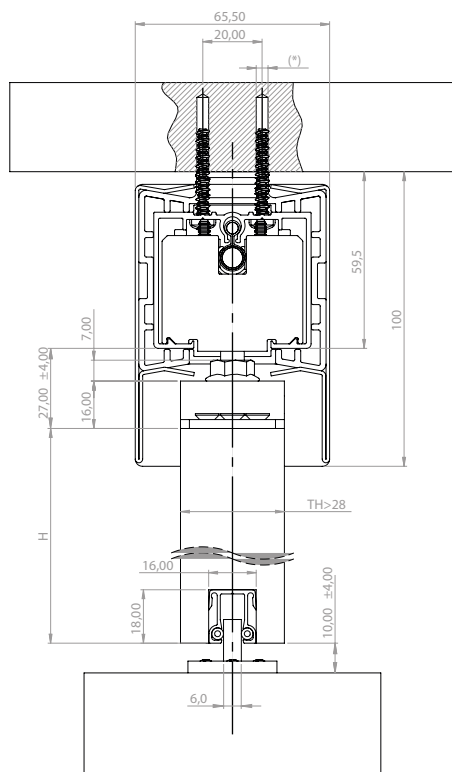
Ceiling fixing



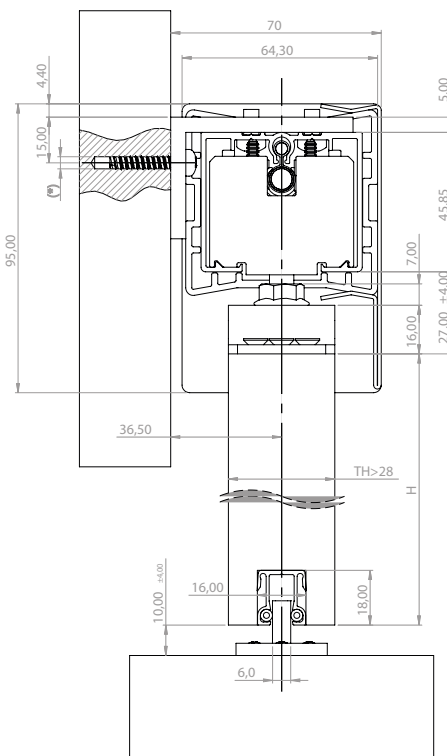
Wall fixing



Ceiling fixing with cover profile



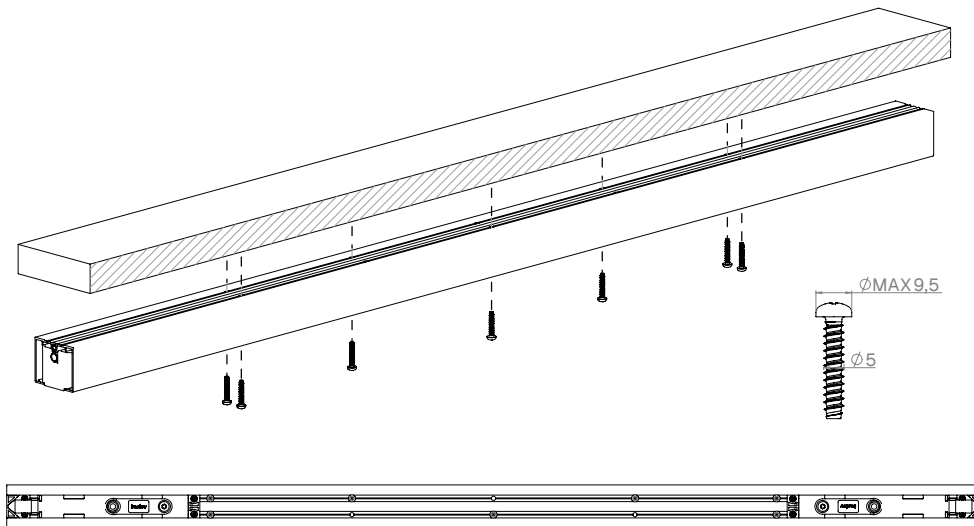
Wall fixing with cover profile



Assembly instructions

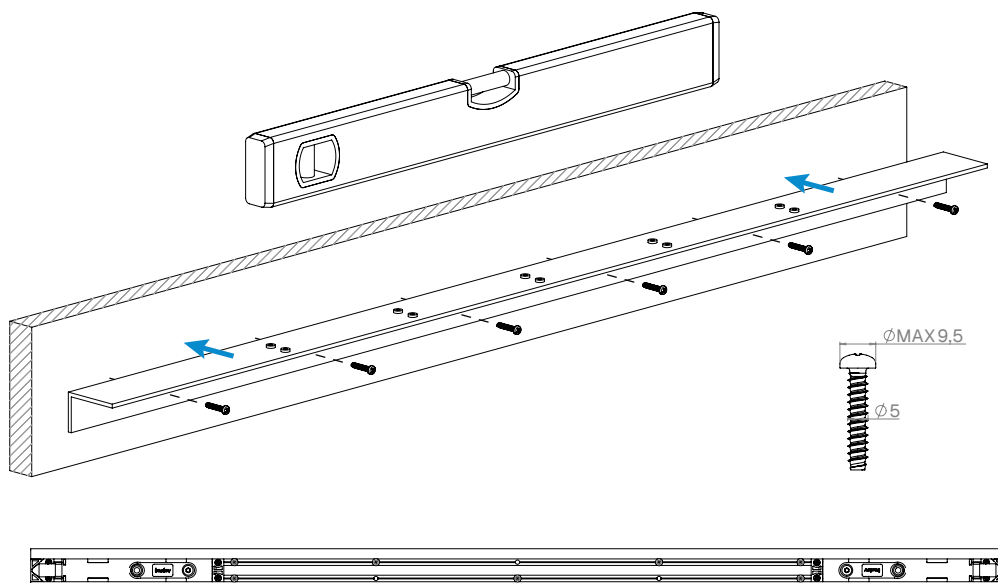
1 A Ceiling fixing

Fix the sliding profile to the ceiling using the screws indicated. Position the screws according to the drilling in the profiles, by placing two screws at both ends respectively. Distribute the screws symmetrically with respect to the sliding axis, as illustrated below.



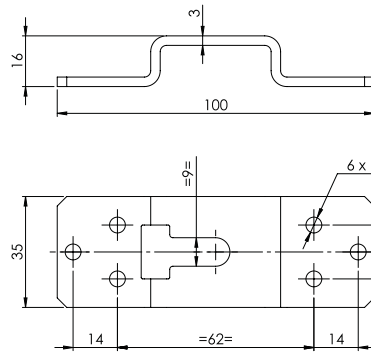
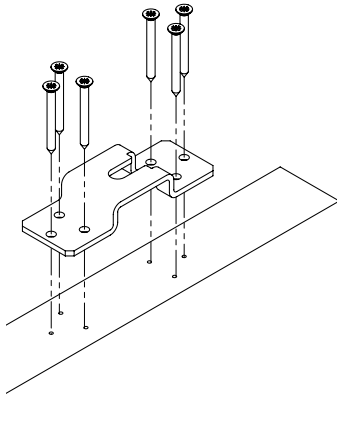
B Wall fixing

Fix the wall-mounted sliding profile using the accessory code 100577. Attach the lateral interface profile, ensuring that it is completely level. Then connect the sliding profile to the interface profile using the screws supplied. Position the screws according to the drilling in the profiles, by placing two screws at both ends respectively. Distribute the screws symmetrically with respect to the sliding axis, as illustrated below.

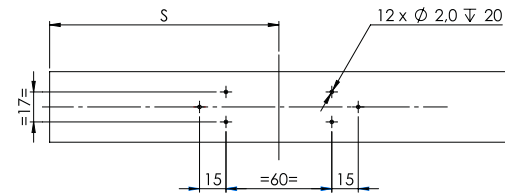


- 2** Fix the connection brackets to the door using the screws indicated, checking the dimension with respect to the side of the door. Make sure that the bracket is positioned symmetrically with respect to the thickness of the door.

Standard version

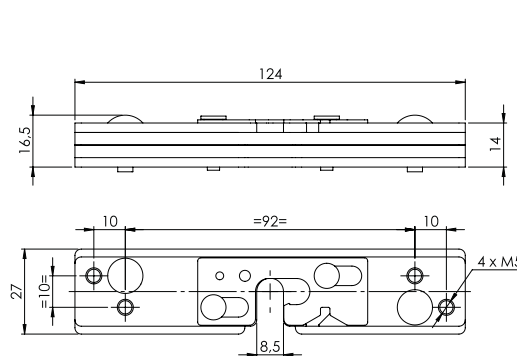
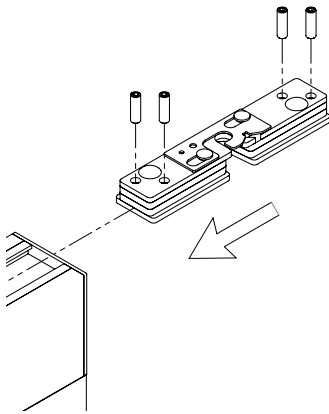


Standard bracket dimensions

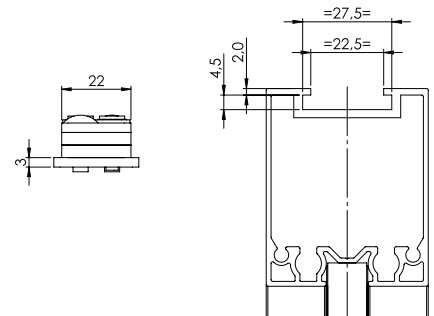


Fixing hole pattern

Alu-framed door version

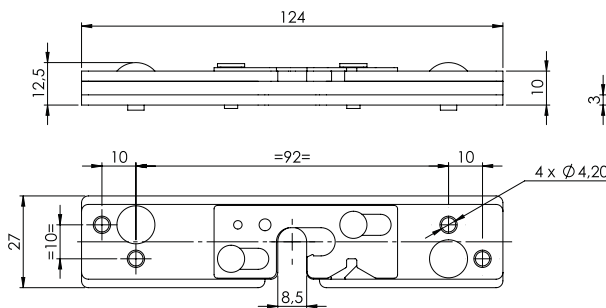
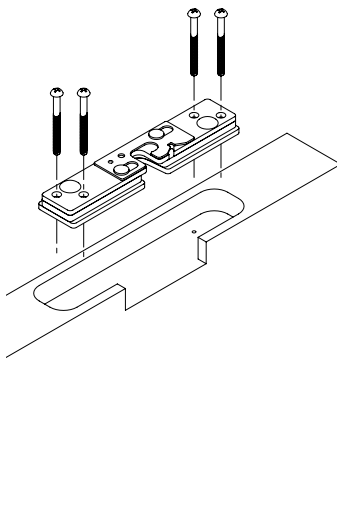


Aluminium bracket dimensions

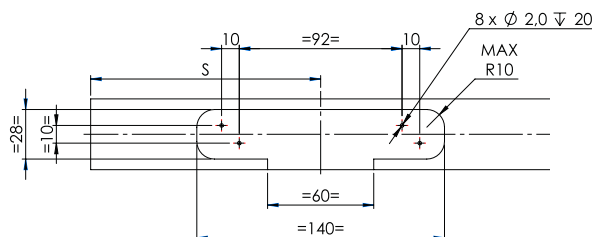


Housing seat for aluminium bracket profile

Wooden door version

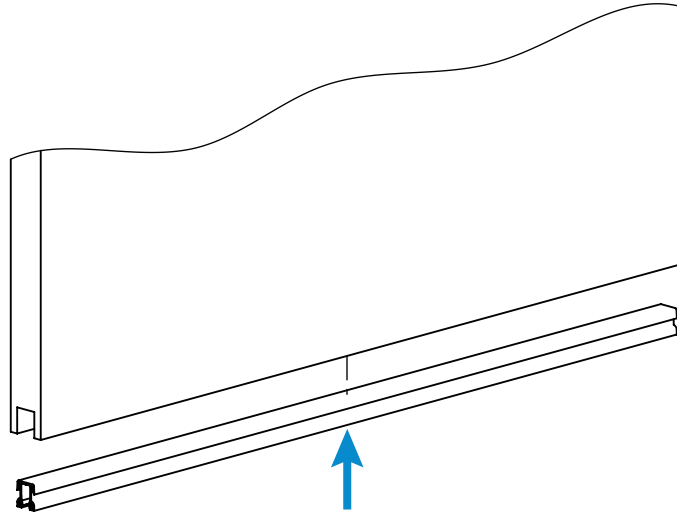


Wood-version bracket dimensions

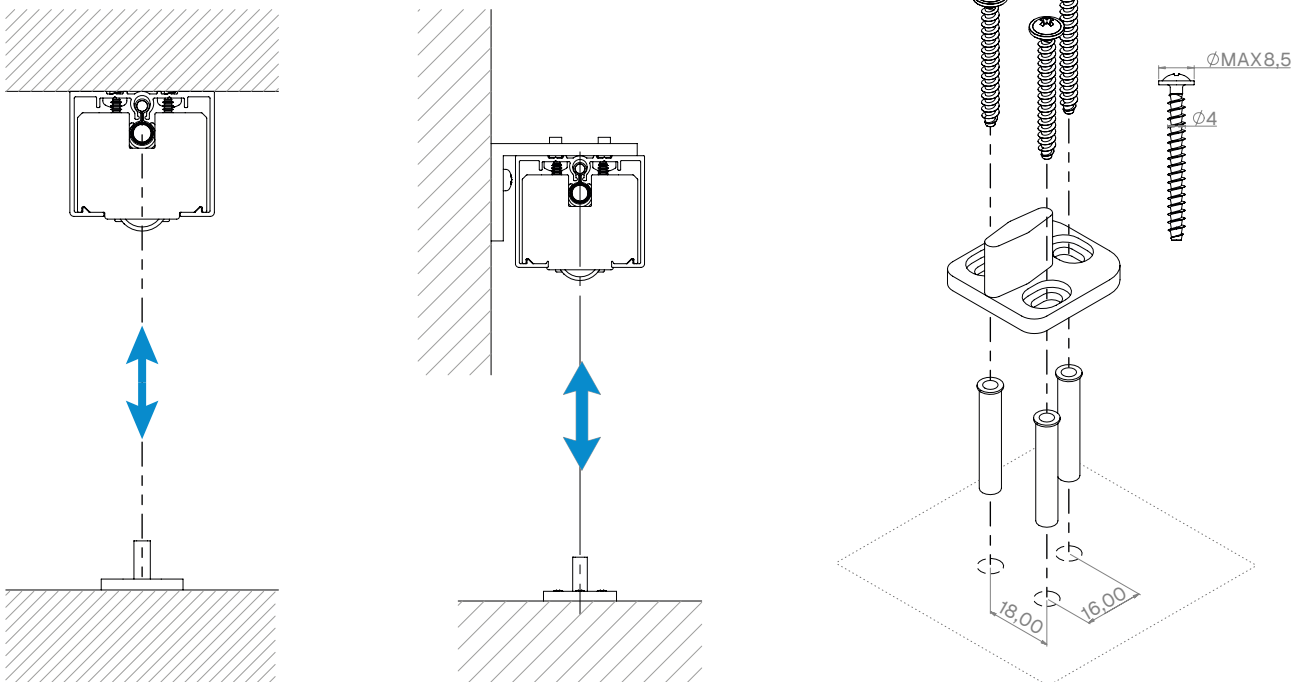


Door leaf machining for built-in fixing - 14 mm depth

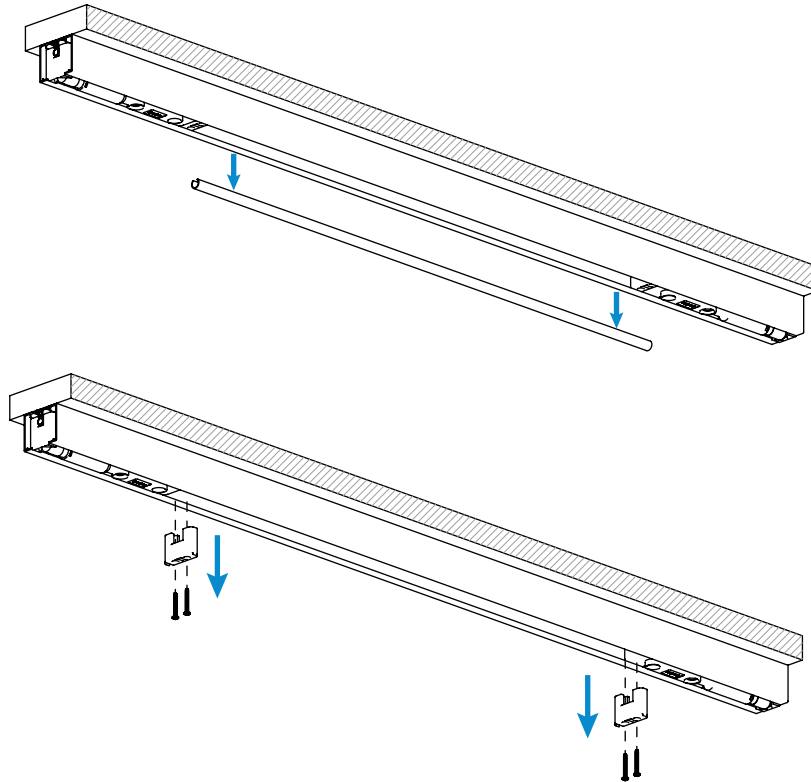
- 3** Place the lower guide into the recess in the door. For wooden doors, fixing is by pressure, for alu-framed doors, fixing is by screws.



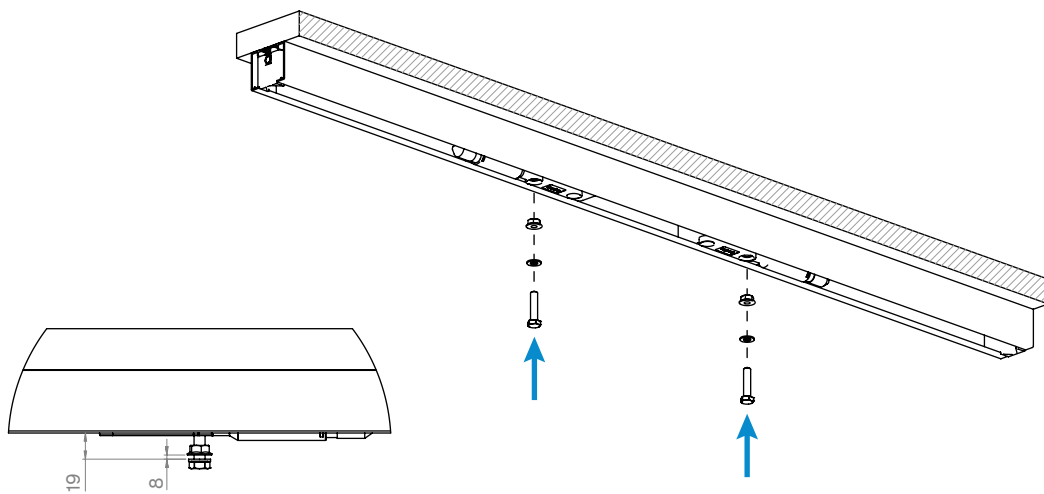
- 4** Fix the plastic floor guide element using screws.



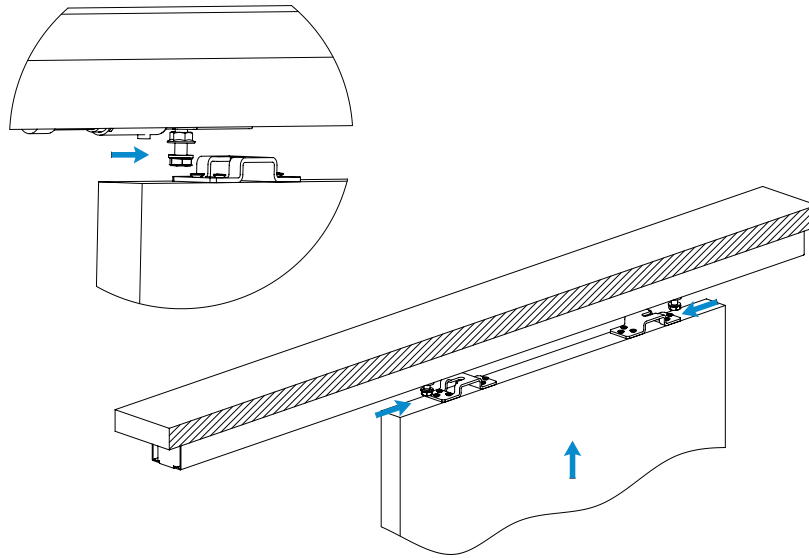
- 5** Remove the plastic protection profile and the two transport stopper caps.



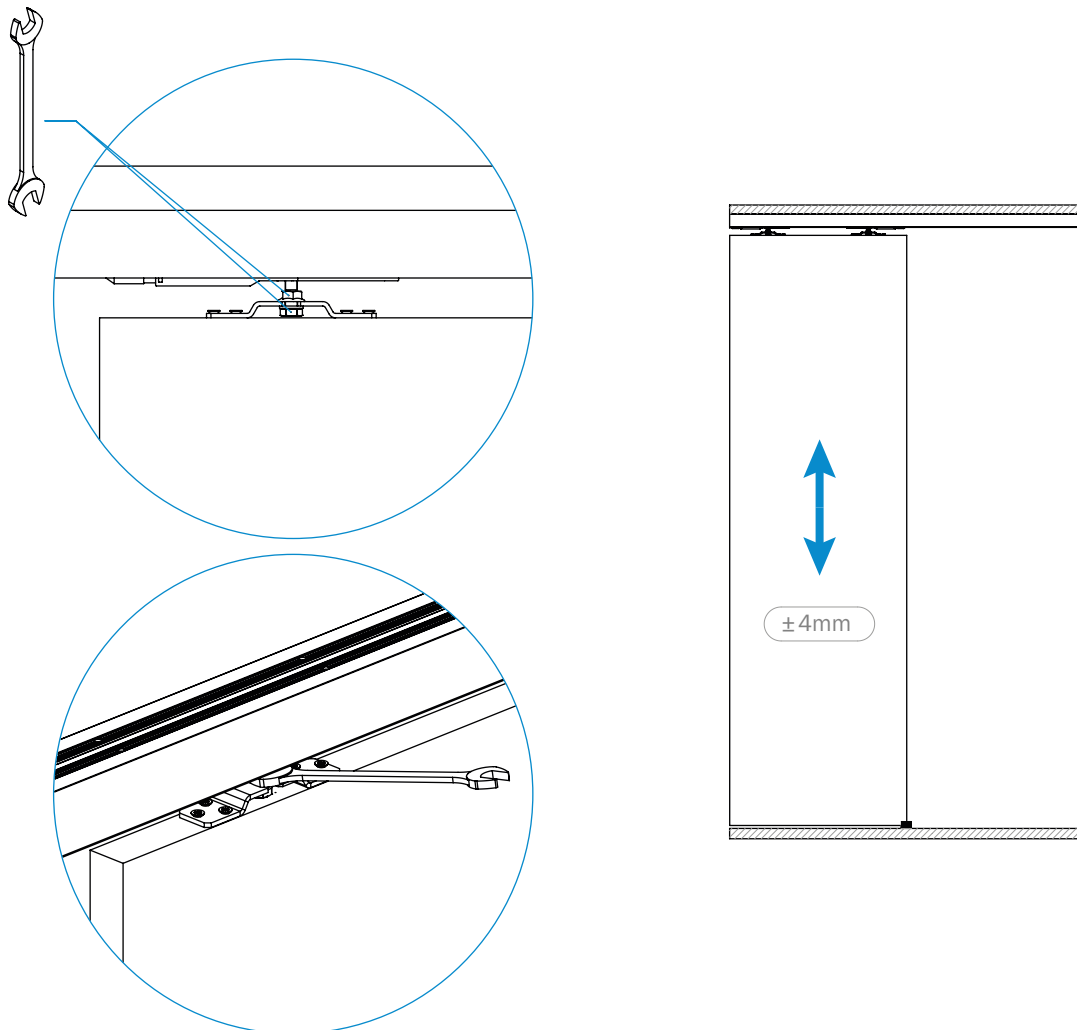
- 6** Insert the two pins of the connection brackets with their nuts and washers. Pre-tighten the pins to bring them to the dimension indicated.



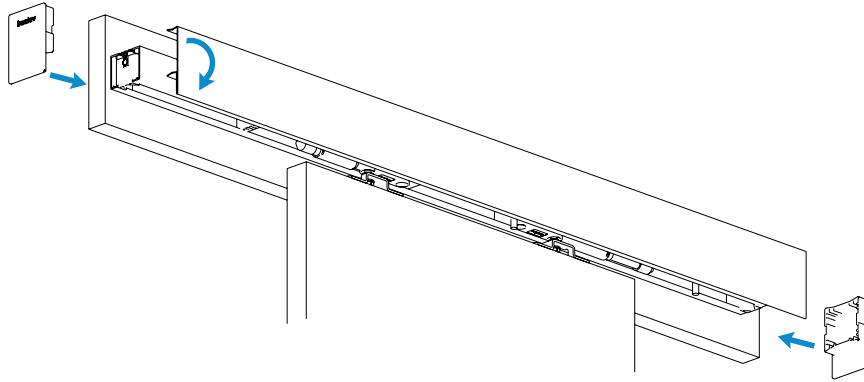
- 7** Mount the door onto the system, inserting first the guide element into the lower profile and subsequently the brackets into the appropriate pins.



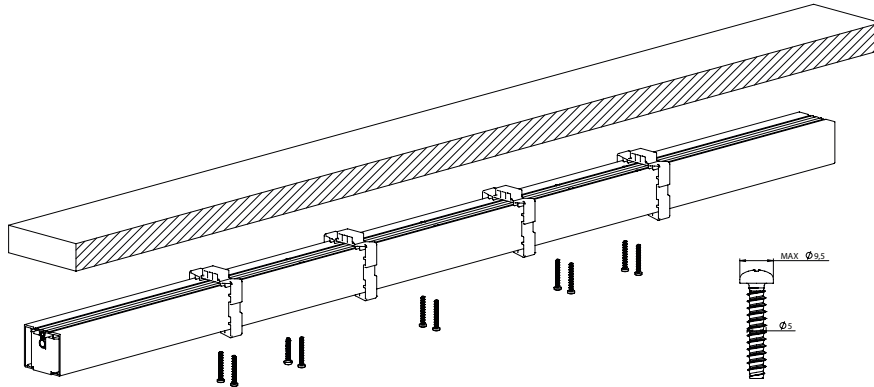
- 8** Adjust the door vertically using the two M8 pins. After adjustment, fix in place using the locknut.



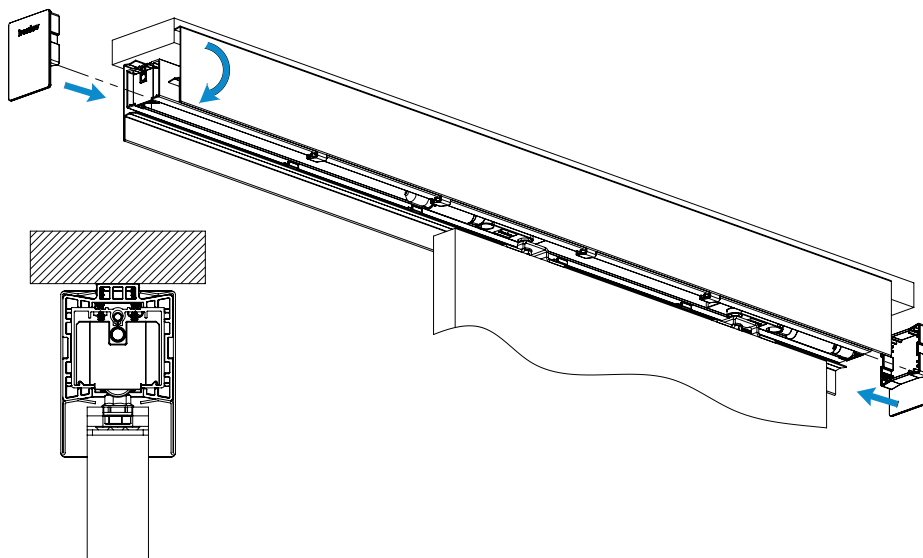
- 9** To fix the cover in wall configuration, apply the caps and then the cover laterally by clipping it onto the caps.



- 10** To fix the cover in ceiling configuration, use the spacers to fix the profile to the ceiling and then apply the caps laterally.



- 11** Then apply the covers laterally on both sides using the clipping profile of the spacers and caps.



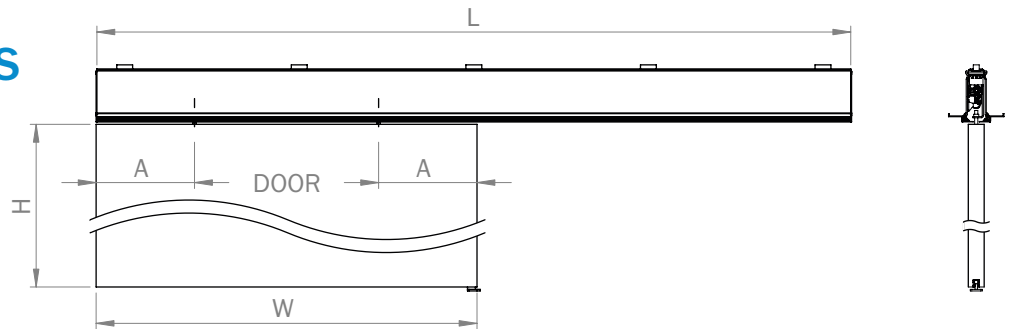
Party

Party system for interior partitions, designed to divide spaces with large doors, offers a refined design and flawless sliding.



Product and accessories

CONFIGURATIONS

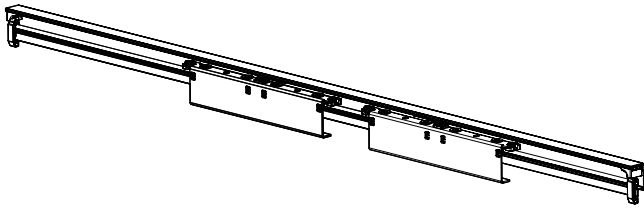


CODE	LOAD CAPACITY	W WIDTH	L LENGTH	A MIN	SYSTEM WEIGHT	H MAX
	kg	mm	mm	mm	kg	m
WD37300	50	700	1350	140	8,6	4
WD37400	50	800	1550	140	9,3	4
WD37500	50	900	1750	140	10,1	4
WD37600	50	1000	1950	140	10,8	4
WD37700	50	1100	2150	140	11,5	4
WD37800	50	1200	2350	140	12,3	4
WD37900	100	1000	1950	248	13,0	4
WD38000	100	1100	2150	248	13,7	4
WD38100	100	1200	2350	248	14,4	4
WD38200	100	1300	2550	248	15,2	4
WD38300	100	1400	2750	248	15,9	4
WD38400	100	1500	2950	248	16,6	4
WD38500	150	1400	2750	354	18,2	4
WD38600	150	1500	2950	354	19,0	4
WD38700	150	1600	3150	354	19,7	4
WD38800	150	1700	3350	354	20,5	4
WD38900	150	1800	3550	354	21,2	4
WD39000	150	1900	3750	354	21,9	4
WD39100	150	2000	3950	354	22,7	4
WD39200	200	1800	3550	461	23,6	4
WD39300	200	1900	3750	461	24,3	4
WD39400	200	2000	3950	461	25,1	4
WD39500	200	2100	4150	461	25,8	4
WD39600	200	2200	4350	461	26,6	4
WD39700	200	2300	4550	461	27,3	4
WD39800	200	2400	4750	461	28,0	4
WD39900	200	2500	4950	461	28,8	4

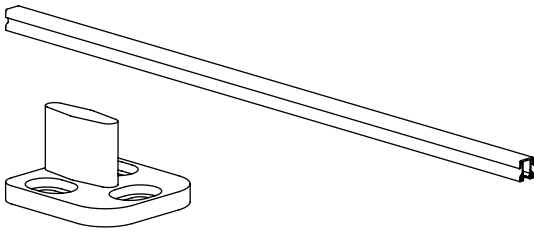
PACKAGE CONTENTS

ARTICLE

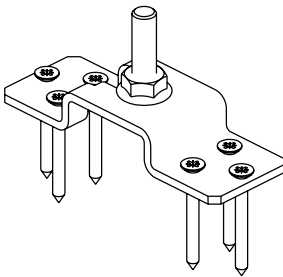
DESCRIPTION



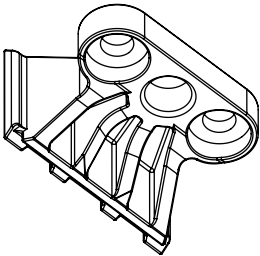
Sliding system



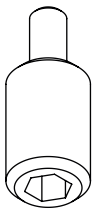
Lower guide with guide fin



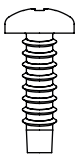
Standard connection bracket assembly



Vertical adjustment pins

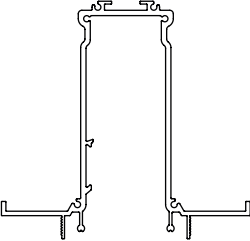
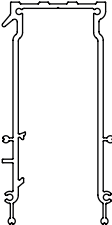

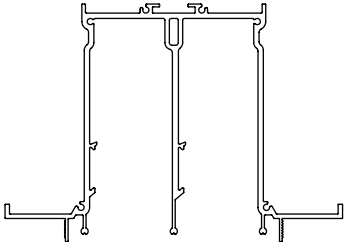


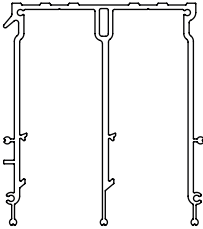
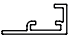


Grub screws

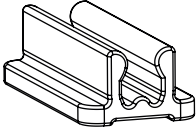
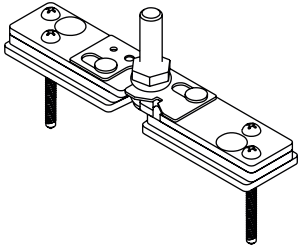
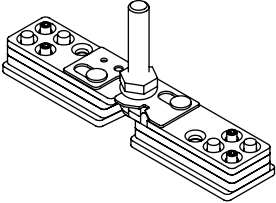
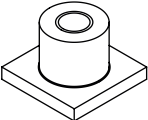


Pin fixing screw

ACCESSORIES

PRODUCT	DESCRIPTION	CODE	PACKAGE QTY.
	Built-in fixing profile – single		
	3m bar	100542	1 pce.
	6m bar	100543	1 pce.
	Ceiling or wall fixing profile – single		
	3m bar	100546	1 pce.
	6m bar	100547	1 pce.
	Wall mounted lateral fixing profile		
	3m bar	100548	1 pce.
	6m bar	100549	1 pce.
	Built-in fixing profile – double		
	3m bar	100552	1 pce.
	6m bar	100553	1 pce.

PRODUCT	DESCRIPTION	CODE	PACKAGE QTY.
	Ceiling fixing profile - double		
	3m bar	100554	1 pce.
	6m bar	100555	1 pce.
	Aesthetical cover profile		
	3m bar	100544	1 pce.
	6m bar	100545	1 pce.
	Aesthetical central cover profile		
	3m bar	100556	1 pce.
	6m bar	100557	1 pce.
	Aesthetical lateral cover profile		
	3m bar	100550	1 pce.
	6m bar	100551	1 pce.

PRODUCT	DESCRIPTION	CODE	PACKAGE QTY.
	Fixing clip	100519	20 pces.
	Door connection bracket - Wooden door version	100574	2 pces.
	Door connection bracket - Alu-framed door version	100575	2 pces.
	Suspension anchor	100576	10 pces.

Technical data

Max. load capacity
200kg

Overall section (mm)
42,4x110



FEATURES

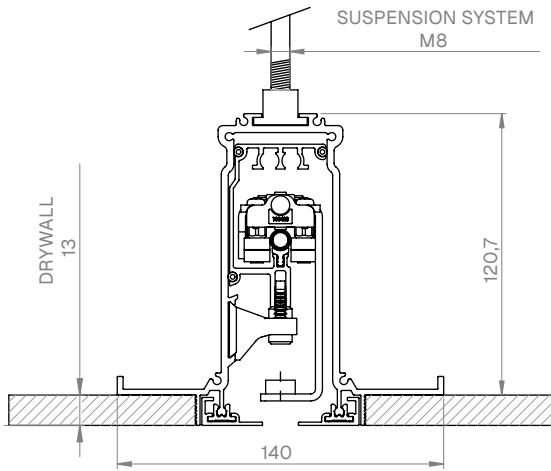
- Ironlev® levitation sliding
- Coated sliding profile for maximum silent movement
- Magnetic soft closing
- Fixing options: ceiling, built-in or wall mounted, single or double rail
- Lower special guide profile for maximum silent movement

TECHNICAL INFORMATION

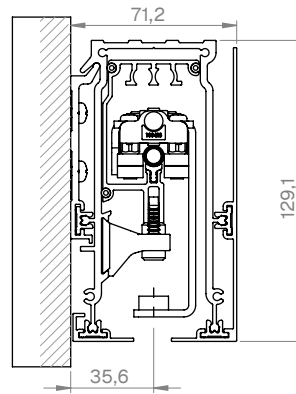
- Sliding force:
 - 50 kg door: 0.5N
 - 100kg door: 1N
 - 150kg door: 1.5N
 - 200kg door: 2N
- Vertical adjustment of the system: ± 5 mm
- Vertical adjustment of the door by means of M8 pins
- Opening force: 10N
- Damping stroke: 100mm (50kg), 140mm (100kg), 140mm (150kg), 140mm (200kg)
- Max. load capacity: 200kg
- Max. door height: 4m
- Available door widths: from 700mm up to 2500mm, in 100mm intervals (min. lengths depending on the load capacity)
- Tested according to UNI EN 1527 to 100.000 cycles

FIXING SCHEME

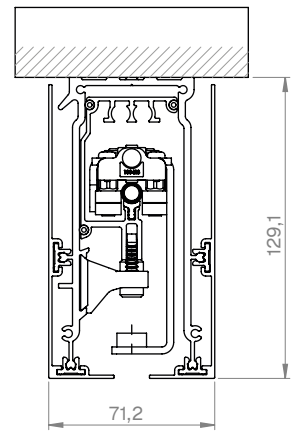
Built-in, single rail



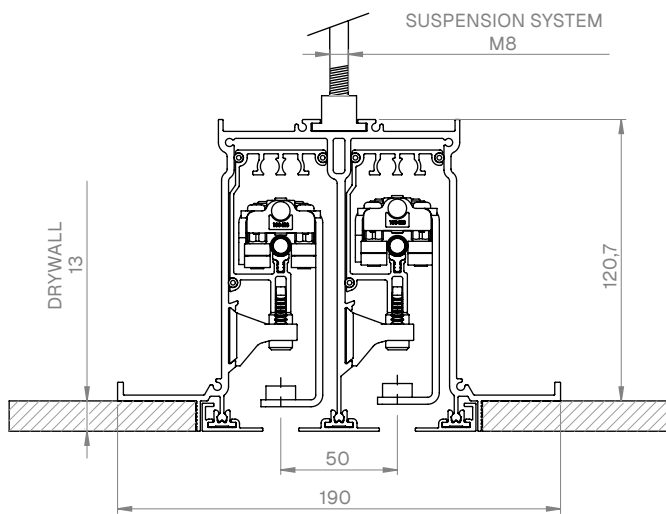
Wall mounted, single rail



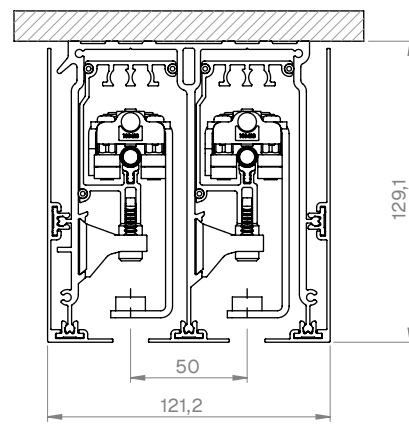
Ceiling, single rail



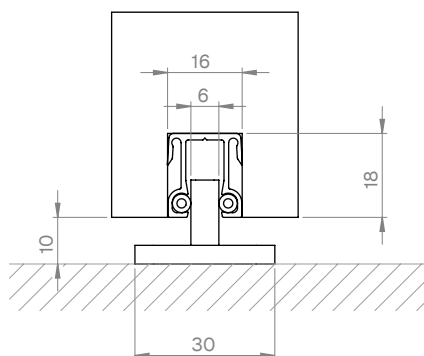
Built-in, double rail



Ceiling, double rail



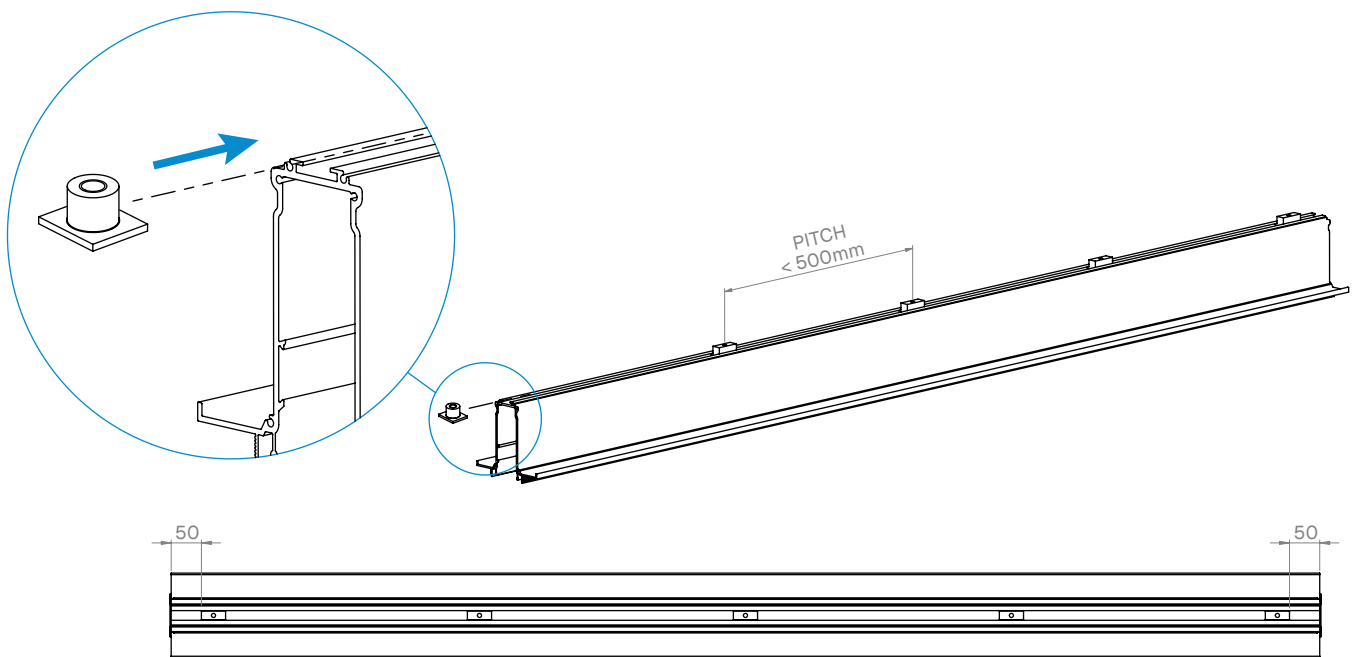
Lower guide profile



Assembly instructions

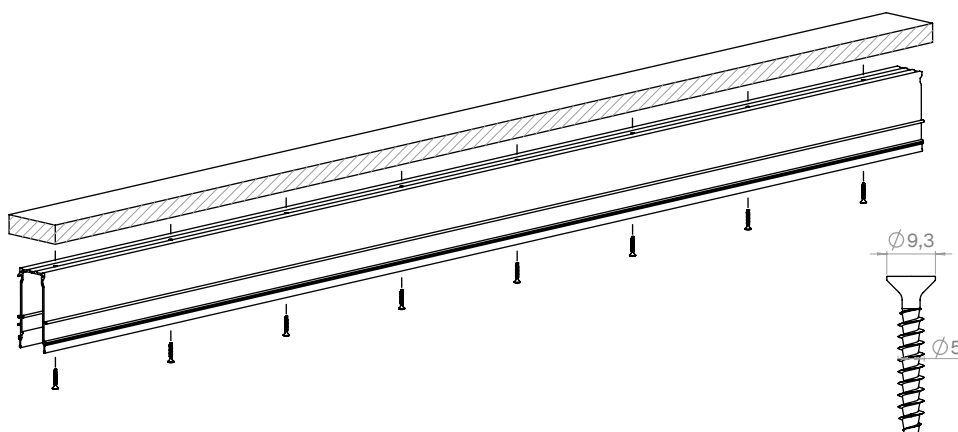
1 A Built-in fixing

Fix the external profile (for single rail, codes 100542/100543; for double rail, codes 100552/100553) to the ceiling using suspension anchors, code 100576. Position the dowels in the appropriate slot with the maximum distance indicated between centres.



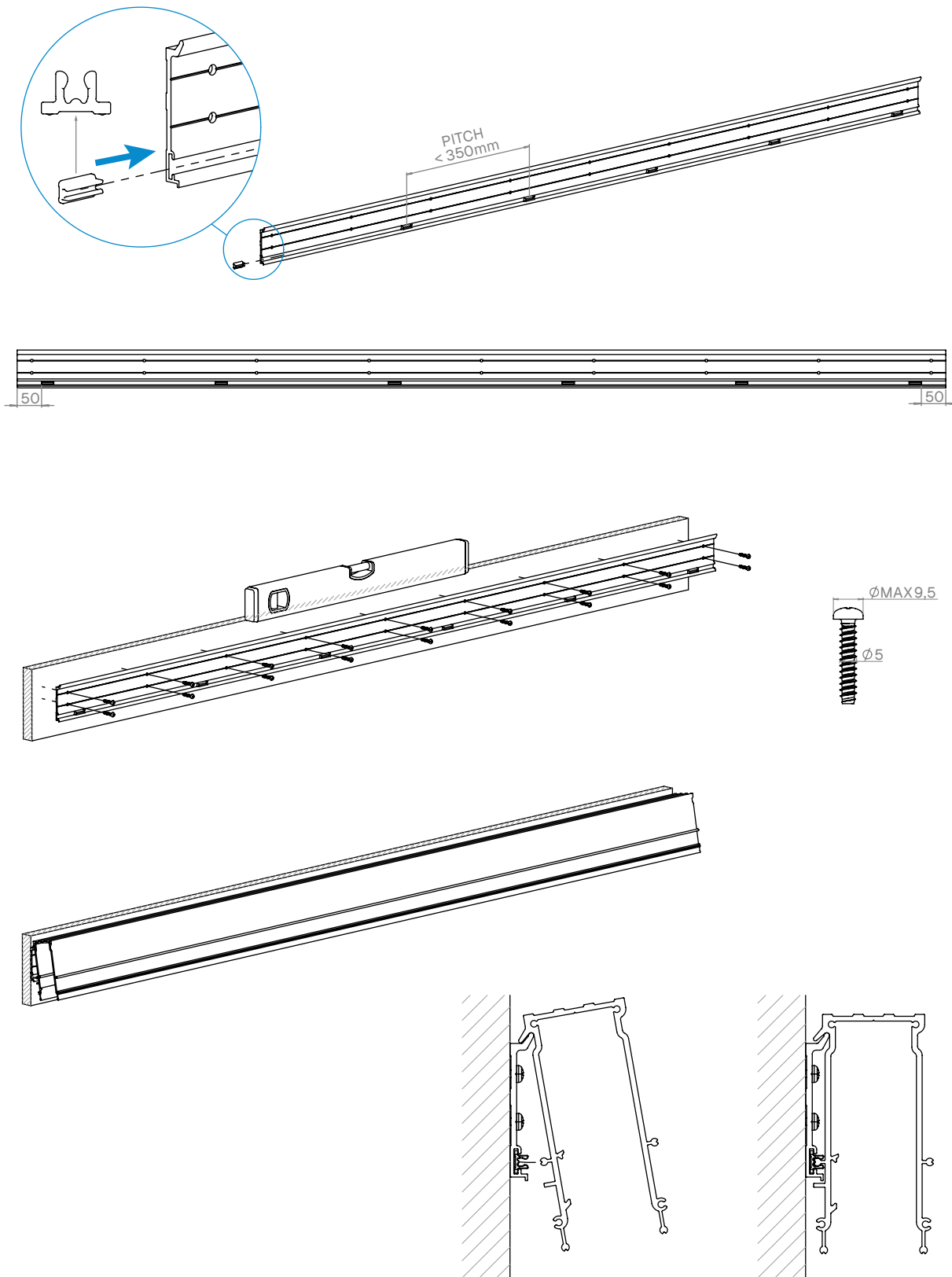
B Ceiling fixing

Fix the ceiling profile (for single rail, codes 100546/100547; for double rail, codes 100554/100555) to the ceiling using the screws indicated.



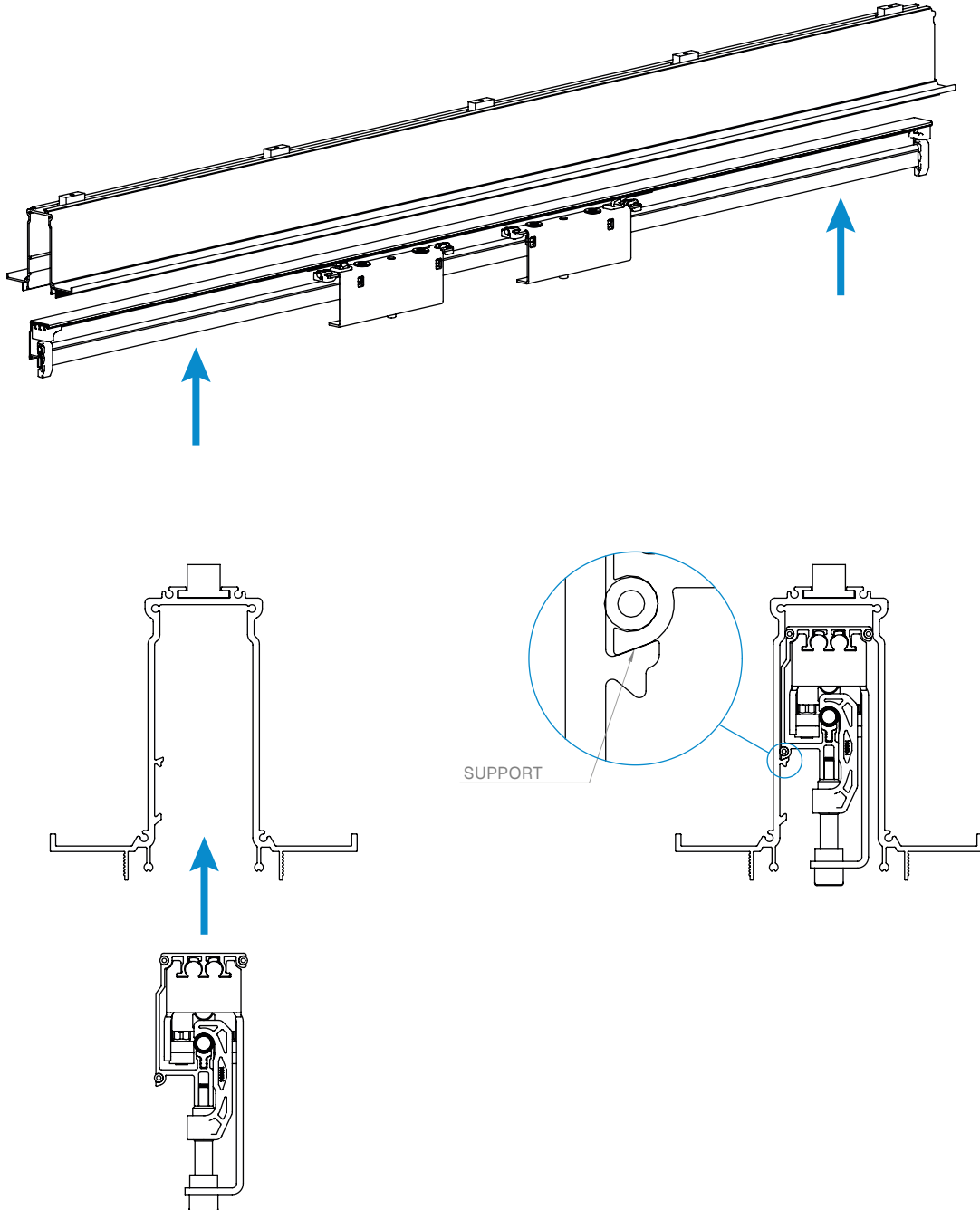
C Wall fixing

Pre-insert the fixing clips (code 100519) on the wall fixing profile (codes 100548/100549) with the maximum pitch indicated. Fix the profile to the wall using the screws indicated. Level the profile before tightening the screws. Mount the external profile (codes 100546/100546) by hooking it with the fixing clips, as indicated in the figure.

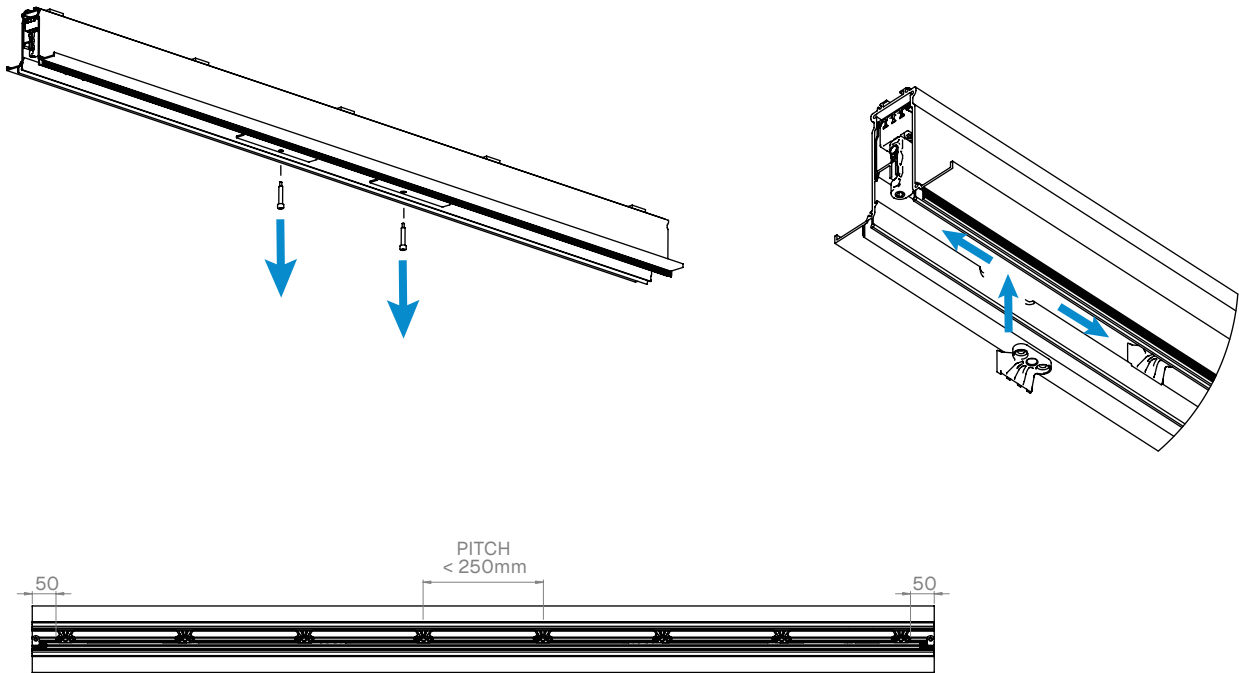


2 Insertion of the technical sliding profile.

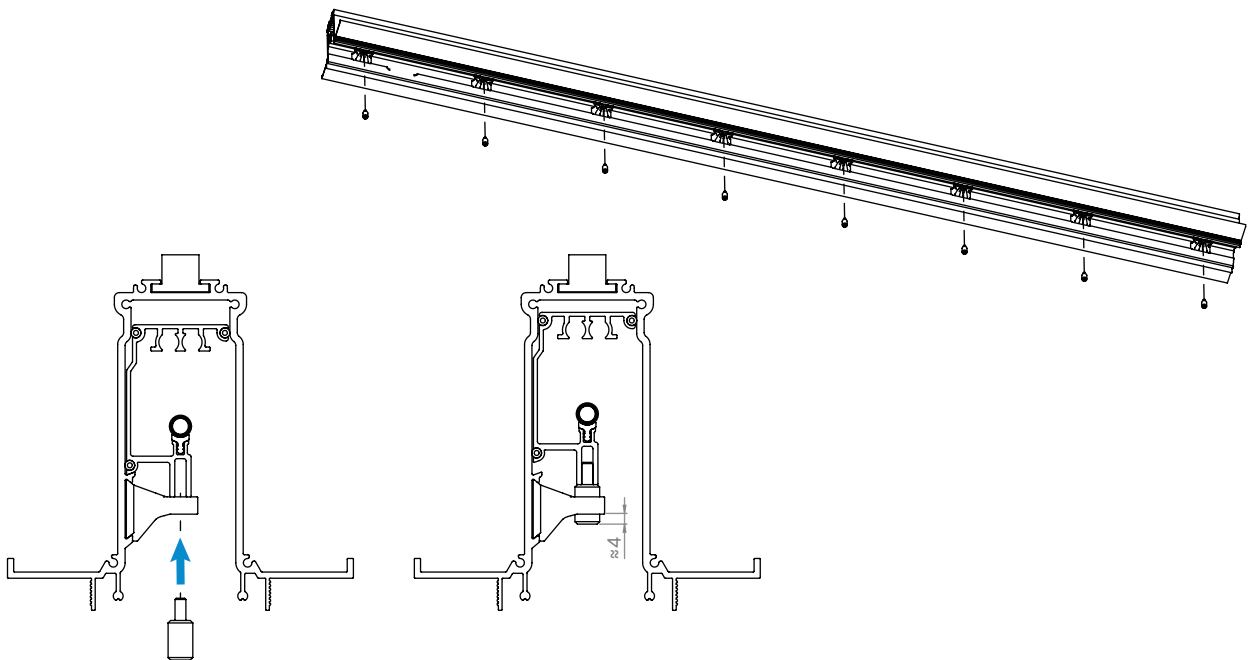
Insert the technical sliding profile inside the external profile and bring the profile to rest on the lateral abutment. Make sure you have stable support before proceeding with the next steps.



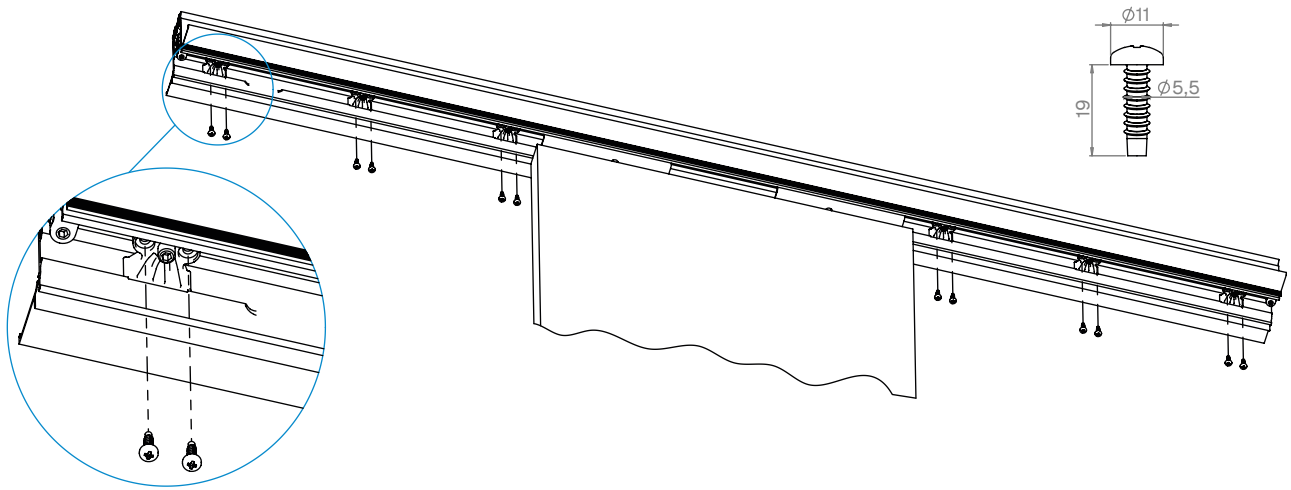
- 3** Remove the two carriage block screws. These screws must be kept to anchor the carriage in case of disassembly. Insert the adjustment dowels using the slot obtained on the external profile and distribute the dowels equally with the maximum distance between centre as indicated in the figure.



- 4** Insert the adjustment grub screws and pre-tighten until reaching the dimension indicated in the drawing.

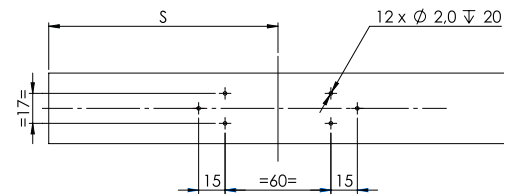
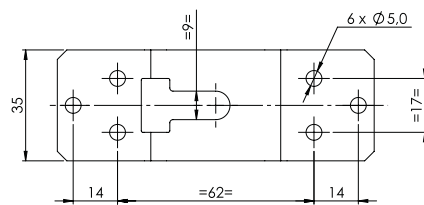
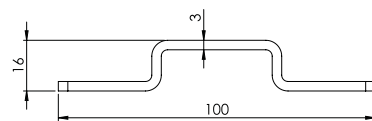
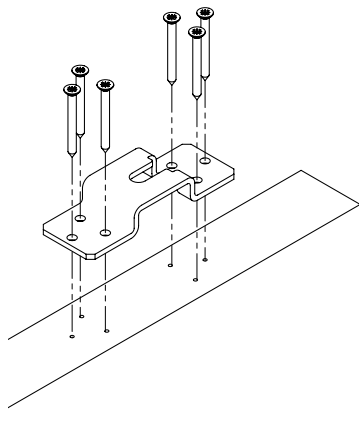


5 Fix the support brackets in place using the appropriate fixing screws included in the package.



6 Based on the type of door used, make the connection between the brackets and the door.

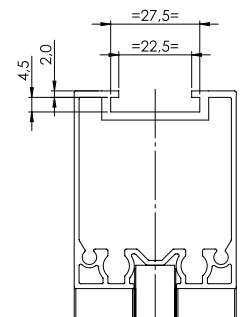
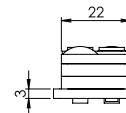
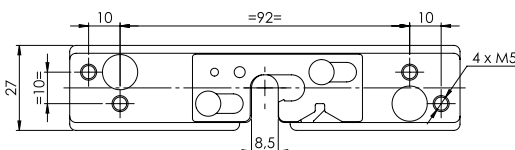
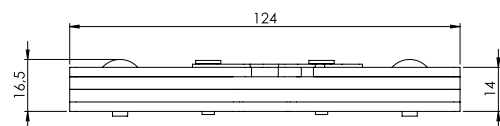
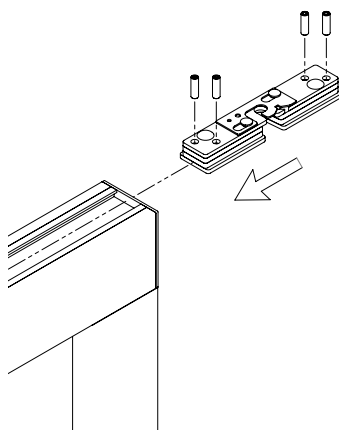
Standard version



Standard bracket dimensions

Fixing hole pattern

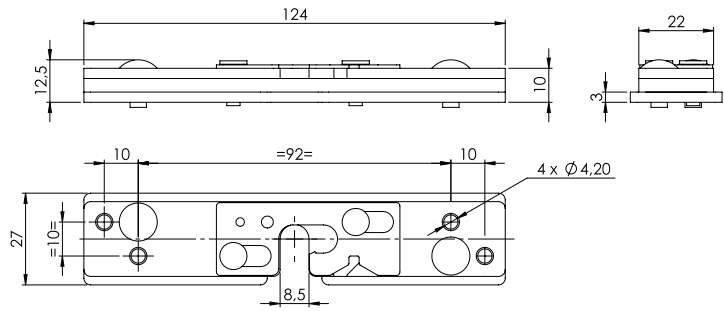
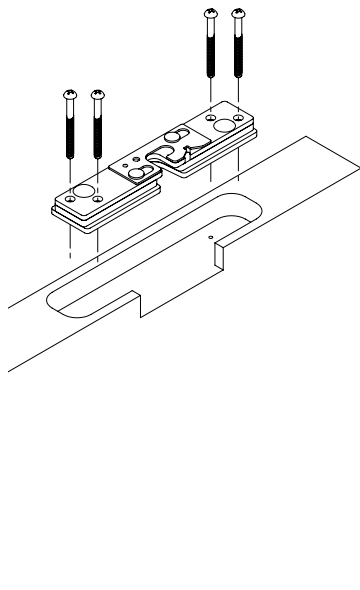
Alu-framed door version



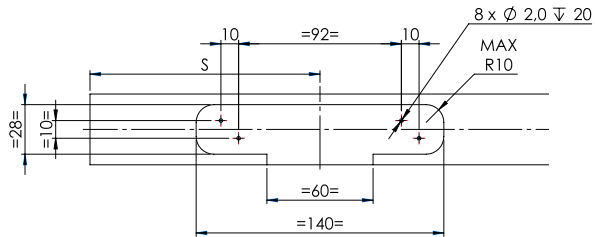
Aluminium bracket dimensions

Housing seat for aluminium bracket profile

Wooden door version

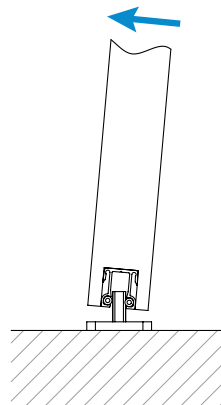
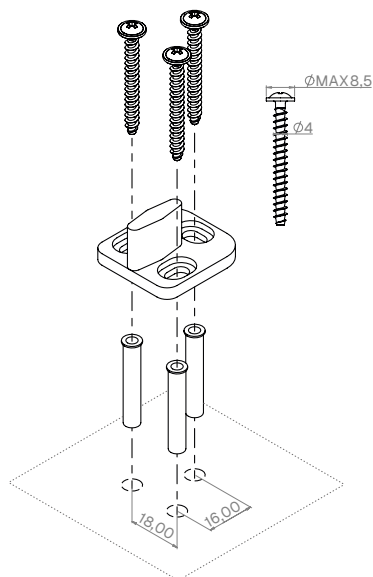
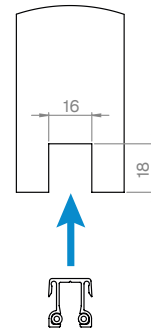
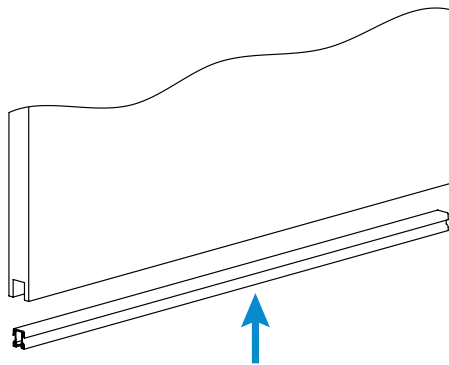


Wood-version bracket dimensions

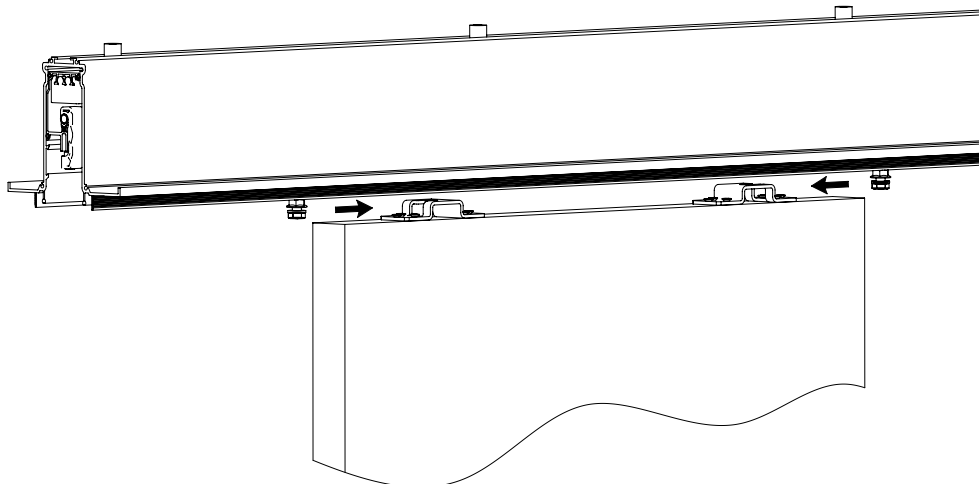


Door leaf machining for built-in fixing - 14 mm depth

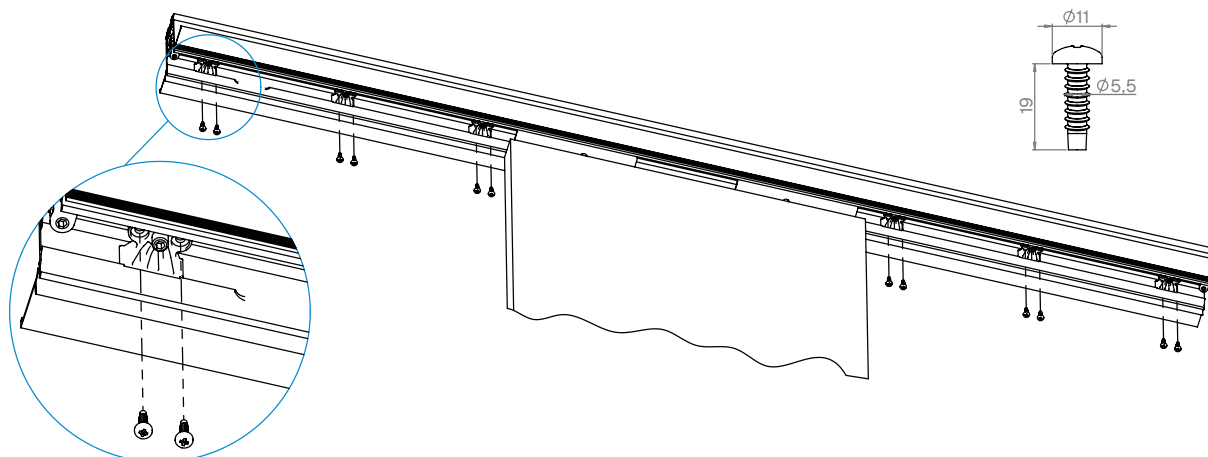
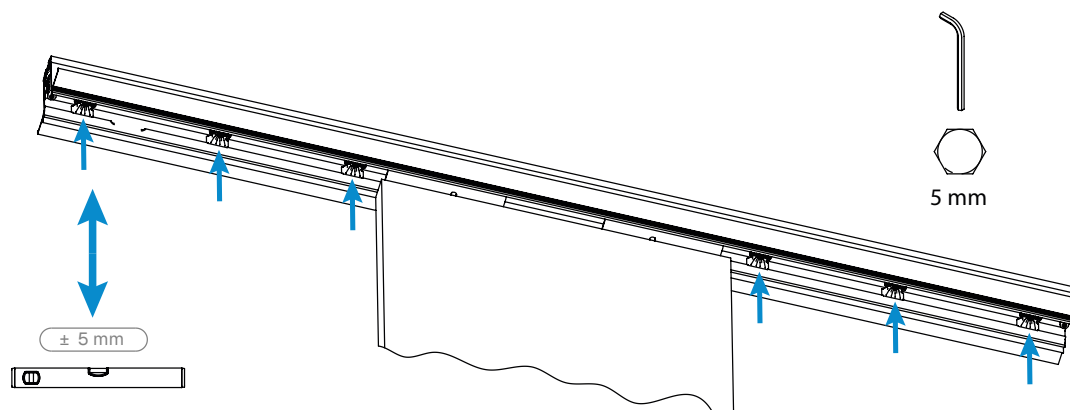
- 7 Insert the lower guide profile, fix the lower guide element to the floor and insert the door onto the lower guide element.



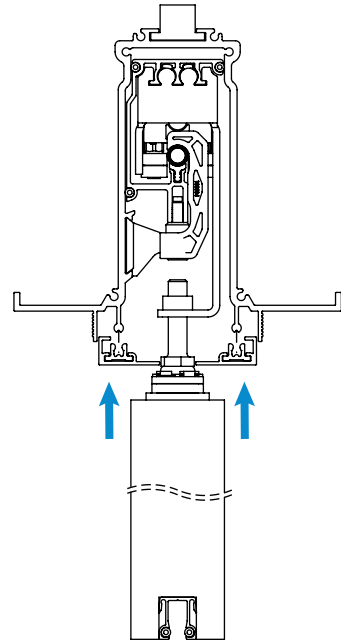
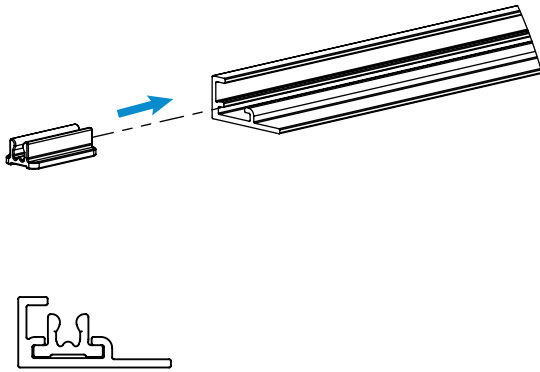
- 8** Connect the door to the sliding system using the two M8 pins. Screw the M8 pins into the two respective threaded bushes.



- 9** Adjust the dowels by screwing the respective doweled grub screws in order to perfectly level the system. Slide the door and position it at various points along its stroke to check that it is levelled. Check the correct sliding of the door and finally lock the dowels using self-threading screws (2 screws for each dowel).



- 10** Insert the fixing clips (code 100519) on the cover profiles (codes 100544/100545) according to the assembly scheme and arrange along the length according to the maximum dimensions indicated in the figure.



Link

D-Way

Technical Manual



Assembly instructions



Test certificates



Party

Technical Manual



Assembly instructions



Test certificates



ironlev

Ironlev One Srl
Via Luigi Galvani, 6/A
31027 Spresiano (TV)
Italy